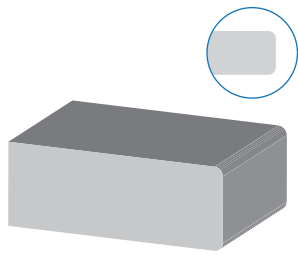
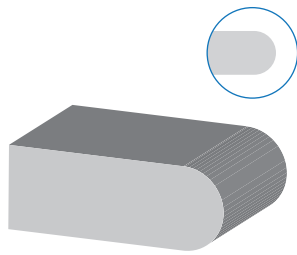


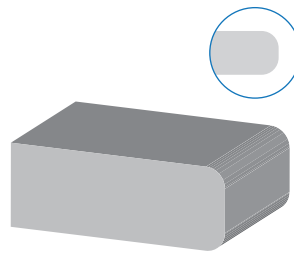
### 3/4" (2cm) Standard Series



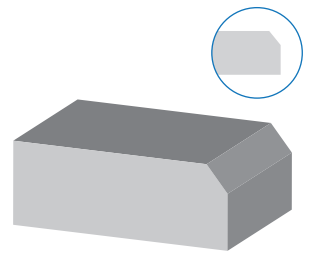
\*The Eased Edge



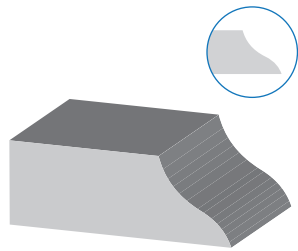
The Bullnose



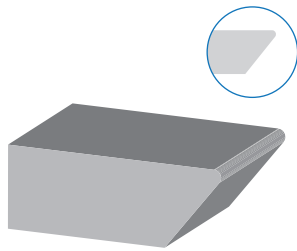
The D Nose



The Top Bevel 1/4" +/-

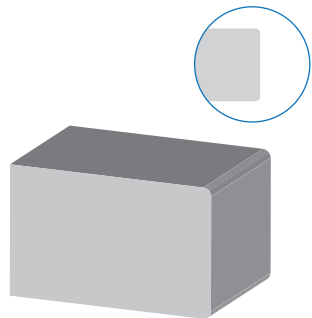


The Ogee

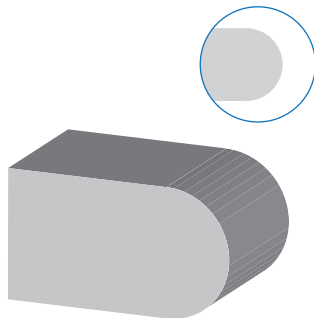


The Shark Nose

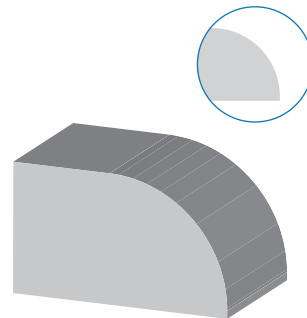
### 1 1/4" (3cm) Standard Series



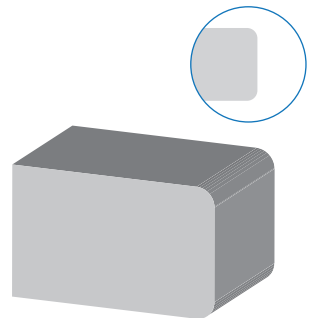
\*The Eased Edge



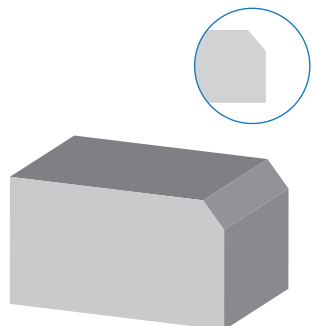
The Bullnose



The Half Bullnose

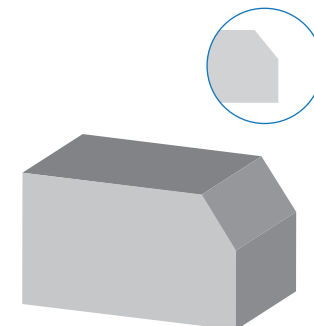


The D Nose



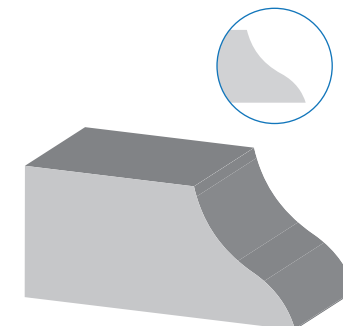
The Top Bevel 1/4" +/-

By Request Only

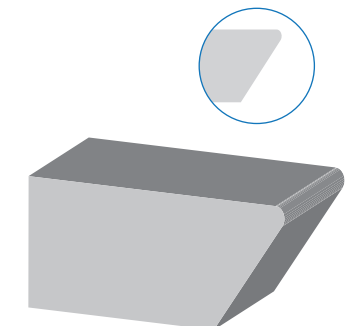


The Top Bevel 3/8" +/-

Standard



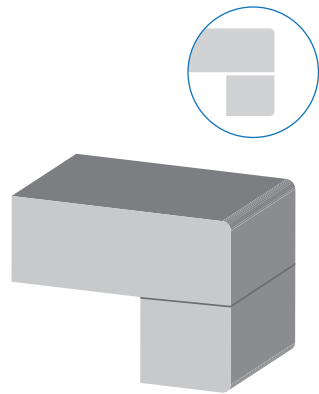
The Ogee



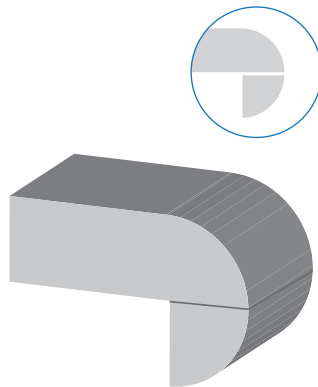
The Shark Nose

The Shark Nose edge profile must have a minimum 1" overhang past the door  
Dekton edge profiles are only available in The Eased Edge and Mitred Eased Edge profiles

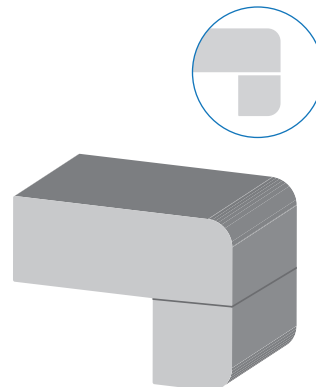
## Laminated Series



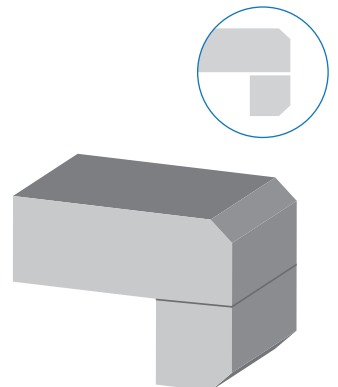
**\*The Eased Edge**



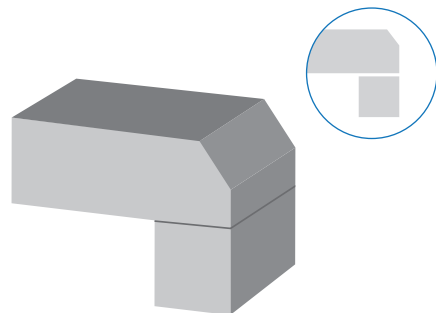
**The Bullnose**



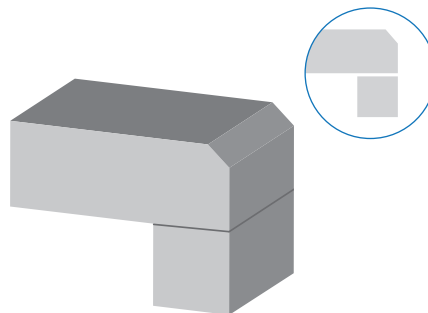
**The D Nose**



**The Double Bevel 1/4" +/-**  
Standard



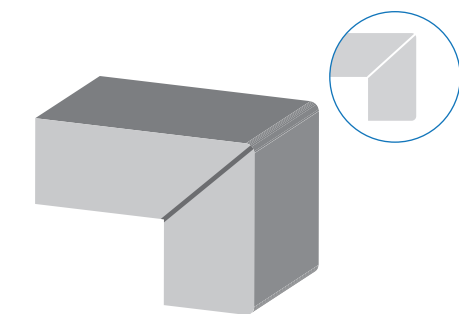
**The Top Bevel 3/8" +/-**  
By Request Only



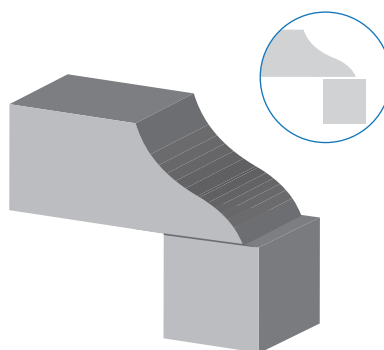
**The Top Bevel 1/4" +/-**  
By Request Only

## ICON SERIES

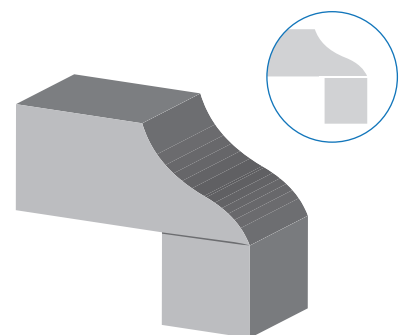
Pricing for mitred edge is based on 1.5". Any mitre request up to 10" will need to be specified at quoting for accurate pricing.



**\* 1 1/2" Mitred**  
**Eased Edge**



**1 1/2" Forward**  
**Ogee Edge**



**1 1/2" Flush**  
**Ogee Edge**

\*The Eased Edges and Mitred Eased Edge are profiles eligible for waterfall panels  
The Shark Nose edge profile must have a minimum 1" overhang past the door  
Dekton edge profiles are only available in The Eased Edge and Mitred Eased Edge profiles